

PART OF E 1/2 OF SEC. 12, T.7 N., R.2 E., S.L.B. & M.

SUNRIDGE SUBDIVISION NO. 2

UNIT NO. 1

LOTS 5-11

IN WEBER COUNTY

SCALE 1"=100'

49

TAXING UNIT 58

PREFIX 23-049

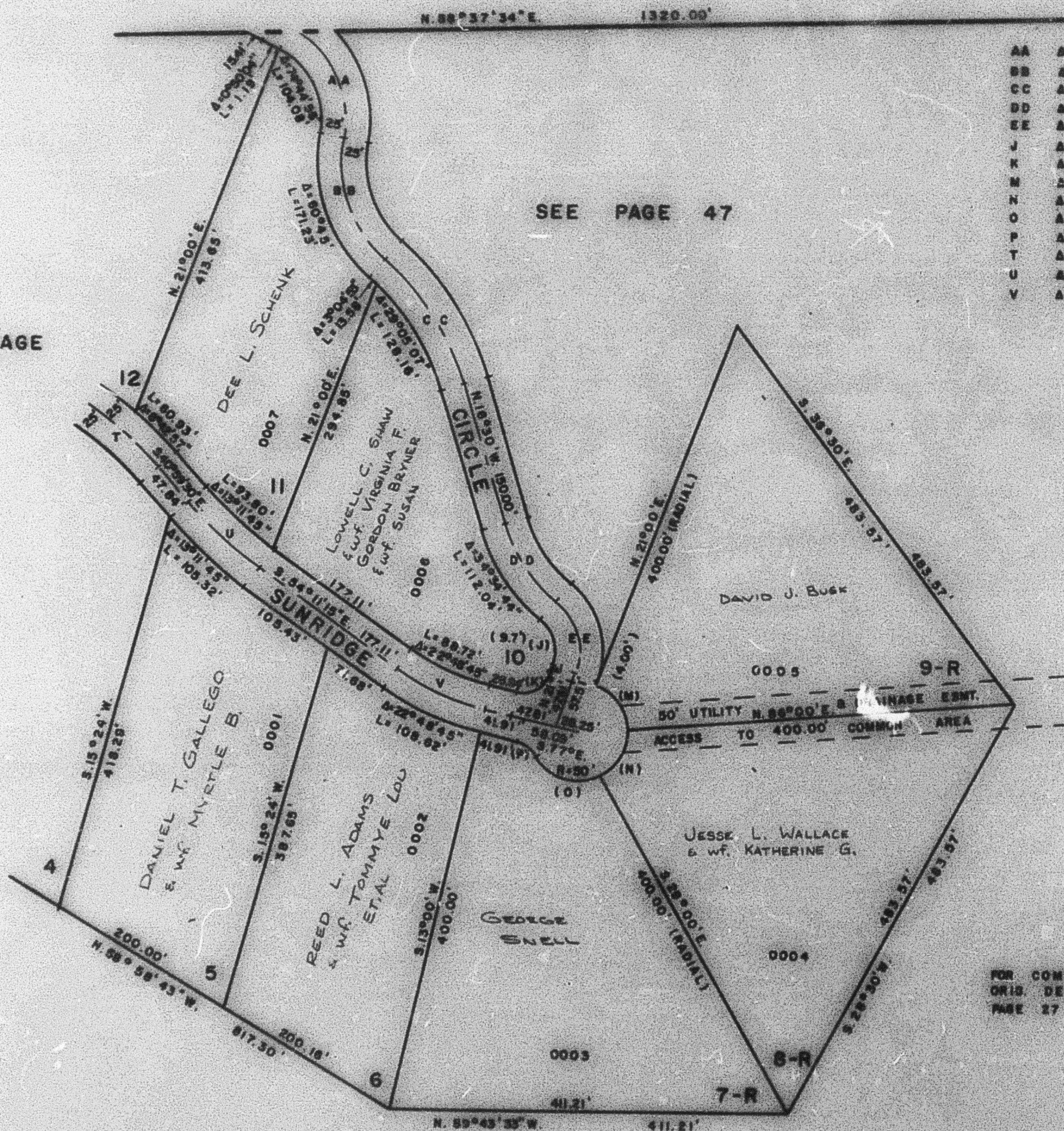
EXCEPT WHERE OTHERWISE SHOWN
ALL LOTS ARE OWNED BY
SUNRIDGE INC.

SEE PAGE 50

SEE PAGE

48

SEE PAGE 47



SEE PAGE 47

FOR COMPLETE ENG. DATA SEE
ORIG. DED. PLAT IN BOOK 17
PAGE 27